

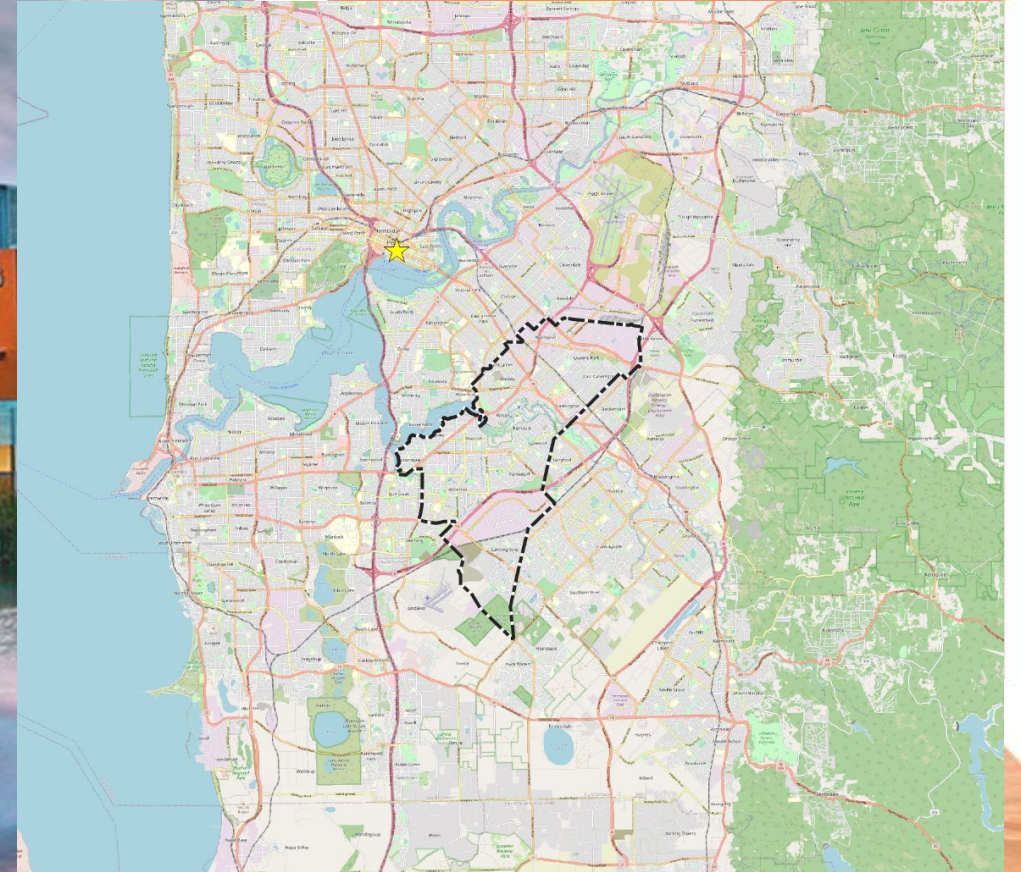


A Local Government Journey with QGIS

The City of Canning Story

About the City of Canning

- Local Government in inner Perth Metro Area.
- Approx:
 - Area: 65Km².
 - Population: 93,000.
 - 10Km from Perth CBD.





About me

- Strategic Planner working at the City of Canning.
- Urban planning background.
- Use QGIS for creating maps and analysing data.
- Passion for Free and Open Source Software.

First Contact (2012)

- House Study with Curtin University.
- QGIS MCA and Scenario plugin.
- Informed Local Housing Strategy.
- Written for QGIS 1.X series.

The screenshot displays the 'Market / Redevelopment Tool' tab of the QGIS MCA and Scenario plugin. The interface is organized into three main sections: Property Attributes, Demographics, and Location. Each section contains a list of variables with checkboxes and sliders, all set to a value of 10. The 'Property Attributes' section includes RPI, Age of dwelling, Area, Frontage, Development efficiency, Lot squareness, Zoning, Strata titled, Vacant land, LGA owned, Extra land, and Sensitive area. The 'Demographics' section includes Age 20 - 29 quartile, Age 30 - 54 quartile, Age 55 - 74 quartile, Age 75+ quartile, and SEIFA quartile. The 'Location' section includes Dist to primary centre, Dist to neighbourhood centre, Dist to local centre, Dist to train station, Dist to bus stop, Dist to main road, Dist to park, Dist to primary school, Dist to secondary school, Dist to tertiary school, Recent nearby demolitions, Relative density, Net increase, and PTAL. At the bottom, there are fields for 'Variables selected: 0' and 'Total Points allocated: 0', a 'Reset Values' button, a 'Title for analysis layer:' field with 'Score' entered, and a 'Run MCE' button.

Section	Variable	Value
Property Attributes	RPI	10
	Age of dwelling	10
	Area	10
	Frontage	10
	Development efficiency	10
	Lot squareness	10
	Zoning	10
	Strata titled	10
	Vacant land	10
	LGA owned	10
	Extra land	10
	Sensitive area	10
Demographics	Age 20 - 29 quartile	10
	Age 30 - 54 quartile	10
	Age 55 - 74 quartile	10
	Age 75+ quartile	10
	SEIFA quartile	10
Location	Dist to primary centre	10
	Dist to neighbourhood centre	10
	Dist to local centre	10
	Dist to train station	10
	Dist to bus stop	10
	Dist to main road	10
	Dist to park	10
	Dist to primary school	10
	Dist to secondary school	10
	Dist to tertiary school	10
	Recent nearby demolitions	10
	Relative density	10
	Net increase	10
	PTAL	10

Variables selected: 0 Total Points allocated: 0

Title for analysis layer: Score

Reset Values Run MCE

Turbulent Times (2014-2015)

- GIS Officer left the City.
- For some time no formal in house GIS resources.
- Contracting GIS out for some time.
- Planner with QGIS knowledge.
- New Leader GIS started in late 2015.

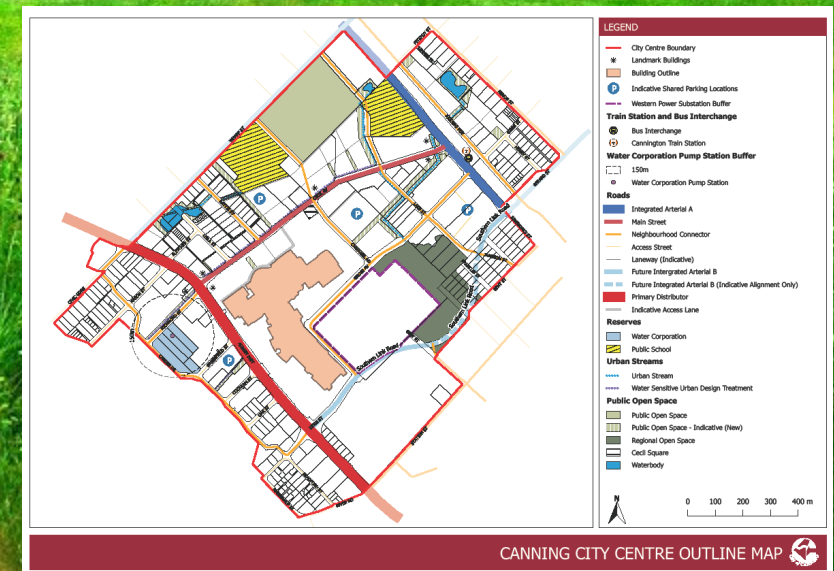
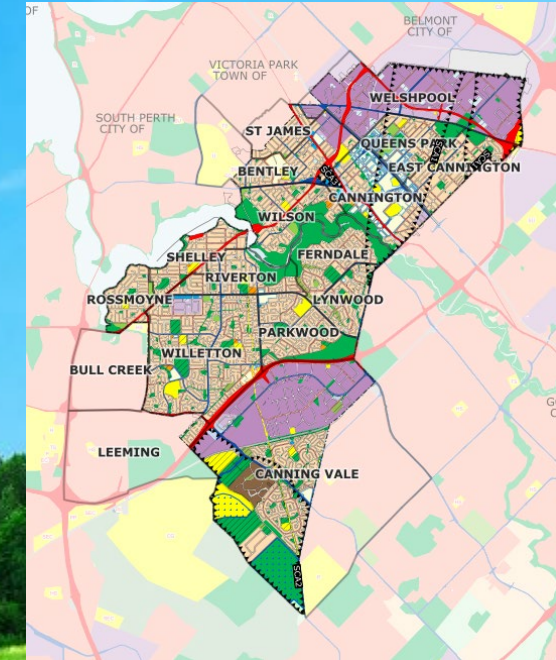
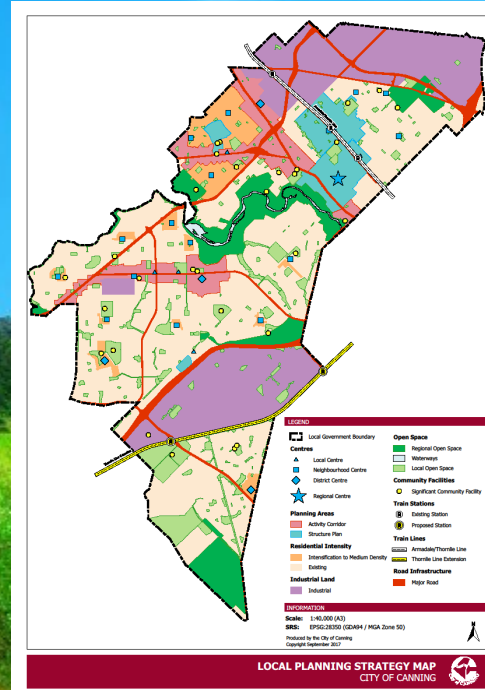
The Great Migration (2016)

- Staff on full day training course.
- Gradual change over.
- QGIS now default GIS software.

Greener Pastures (2016-2018)

QGIS used for

- Local Planning Strategy Map
- Local Planning Scheme Map
- Scheme Amendment Maps
- Structure Plan Maps



Giving Back (2017-2018)

- Bronze sponsor/sustaining member since 2018.
- Giving back to the community.
- Recognises value of QGIS.
- Supportive GIS leader and IT manager made it possible.

City of Canning



Australia

Membership level: Small

(01 January 2020 - 31 December 2020)

Network Analysis (2018-2020)

- Planning principles refer to walkable catchments.
- Great in theory but not easy for planners to calculate walkable catchments.
- Impacts ability to make informed decisions and recommendations.



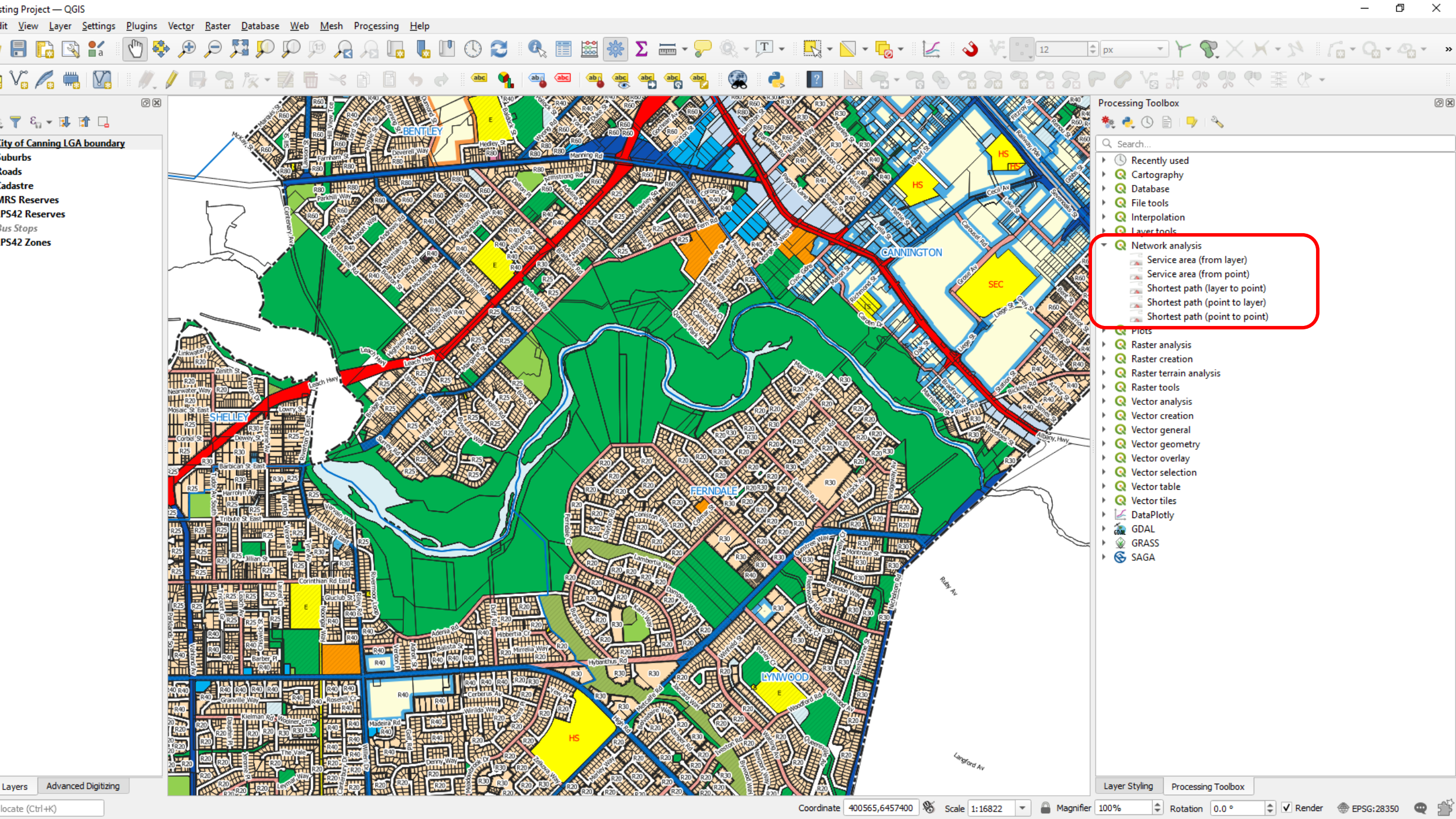
Source: Liveable Neighbourhoods (Draft 2015)

Network Analysis (2018-2020)

- Old way – measure manually.
- Desire to do walkable catchments accurately in GIS.
- Initial look at QGIS 2.18.



Then QGIS 3.0 was released.



City of Canning LGA boundary

Suburbs

Roads

Cadastral

MRS Reserves

PS42 Reserves

Bus Stops

PS42 Zones

Processing Toolbox

Search...

- Recently used
- Cartography
- Database
- File tools
- Interpolation
- Layer tools
- Network analysis**
 - Service area (from layer)
 - Service area (from point)
 - Shortest path (layer to point)
 - Shortest path (point to layer)
 - Shortest path (point to point)

- Plots
- Raster analysis
- Raster creation
- Raster terrain analysis
- Raster tools
- Vector analysis
- Vector creation
- Vector general
- Vector geometry
- Vector overlay
- Vector selection
- Vector table
- Vector tiles
- DataPlotly
- GDAL
- GRASS
- SAGA

Layers Advanced Digitizing

Locate (Ctrl+K)

Coordinate 400565,6457400 Scale 1:16822

Magnifier 100%

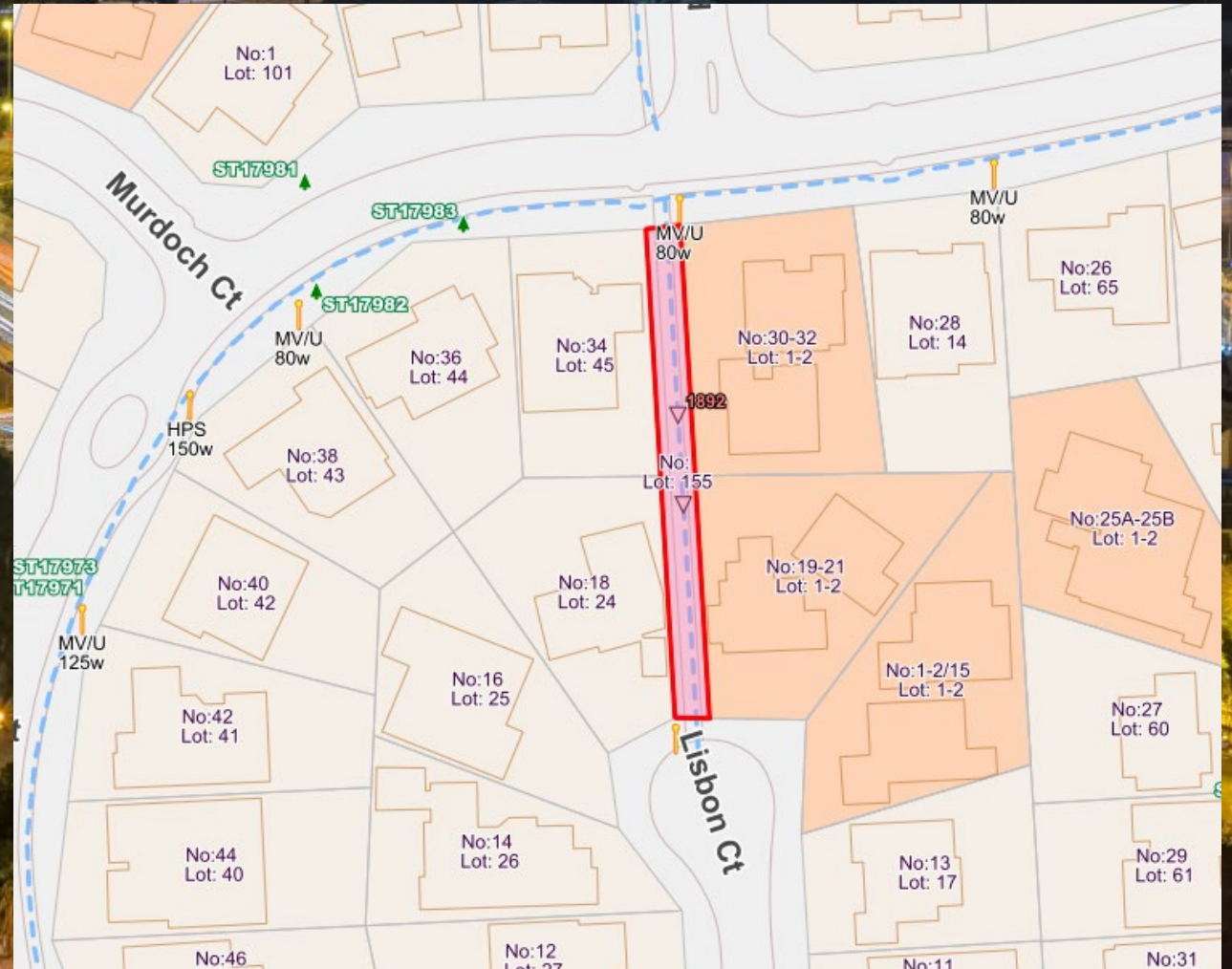
Rotation 0.0°

Render

EPSG:28350

Network Analysis (2018-2020)

- Network analysis was now easy.
- Example Project – Review of Pedestrian Access Ways.

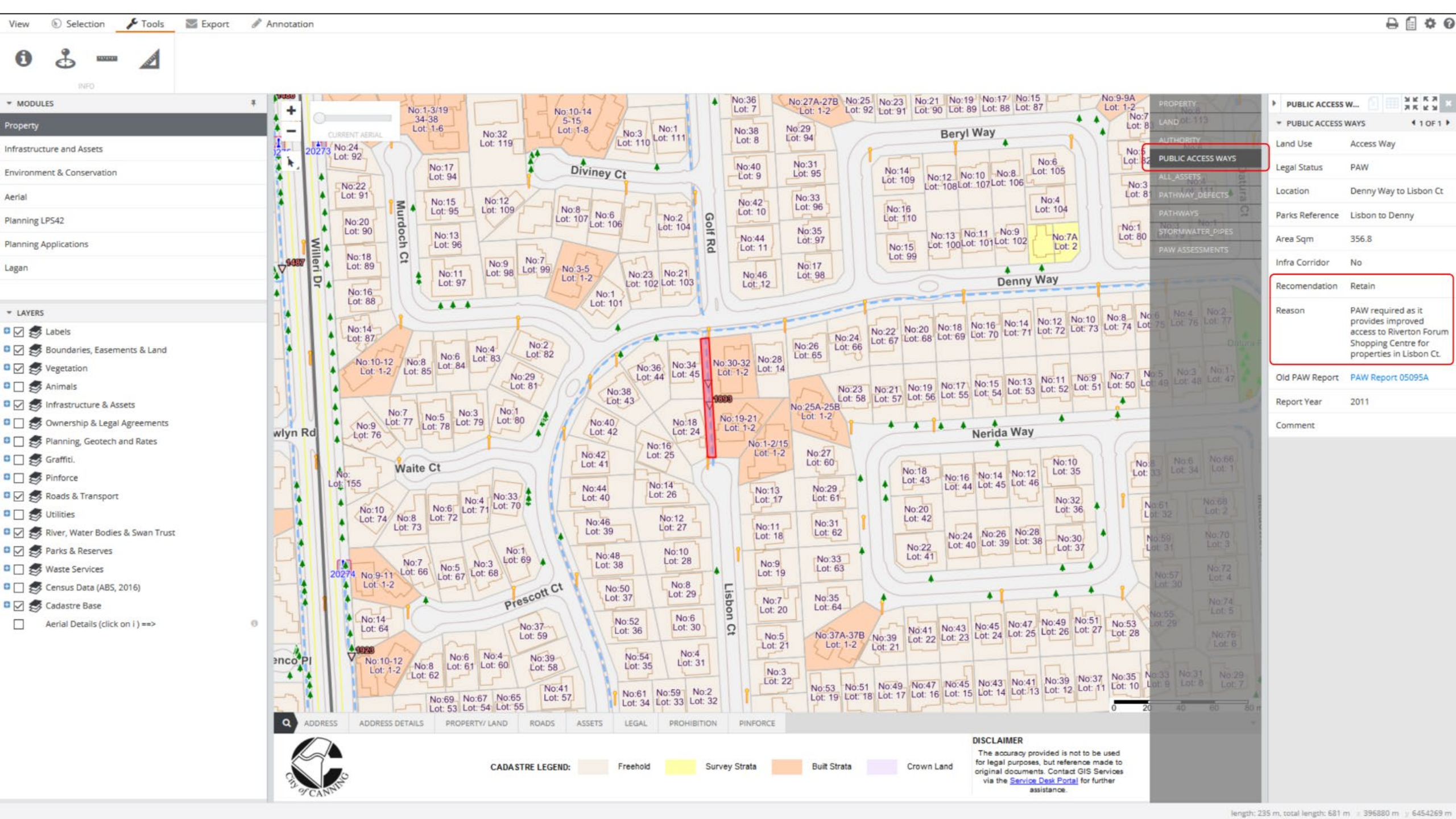




Network Analysis (2018-2020)

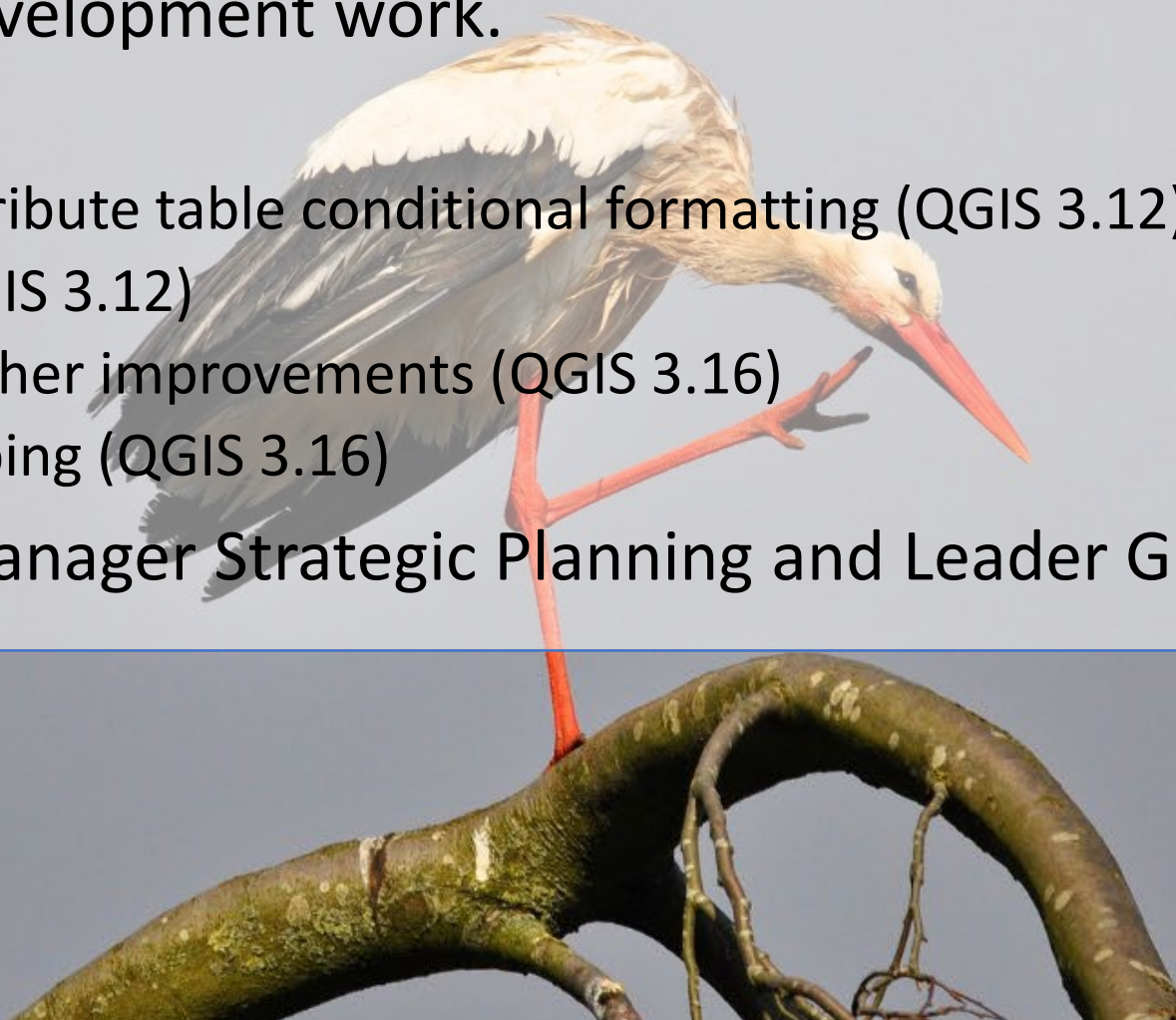
- Measured distance from:
 - Shopping centres
 - Parks
 - Playgrounds
 - Schools
 - Train stations
 - Bus stops
- With and without PAW in place.
- Compare the difference
 - Red Line without PAW
 - Blue Line with PAW



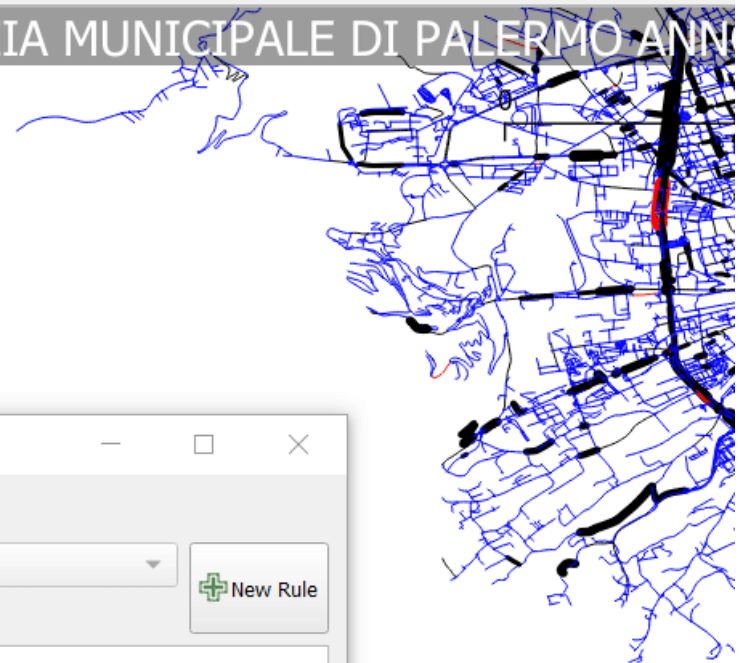


Scratching the Itch (2020)

- Funded QGIS development work.
- Including:
 - Print layout attribute table conditional formatting (QGIS 3.12)
 - Fixed Table (QGIS 3.12)
 - Fixed Table further improvements (QGIS 3.16)
 - Atlas layer clipping (QGIS 3.16)
- Support from Manager Strategic Planning and Leader GIS



SINISTRI STRADALI RILEVATI DALLA POLIZIA MUNICIPALE DI PALERMO ANN



v_inc_feriti_roads :: Features Total: 1946, Filtered: 1946, Selected: 0

	incidenti	feriti	strade_pk
1	R F C	1	4645
2	R F	1	8083
3	R F	2	8403
4	R F	1	9931
5	R C F C F	5	4936
6	R C F C	2	5204
7	R C C	1	857
8	R C	NULL	6032
9	R C	NULL	11666
10	R	2	8769
11	R	1	9157

☐ Field

abc incidenti

+ New Rule

☒ Full row

abc
123

"incidenti" ilike '%C%'

Show All Features

sqlite
e



20 40 60 80 100 120 140 160 180 200 220 240 260

Item 1	\$123
Item 2	\$4,455

1

Undo History

Items

Undo History

<empty>

Move Items

Change Table Contents

Change Table Contents

Layout

Item Properties

Guides

Atlas

Item Properties

Table

▼ Main Properties

Edit Table...

▼ Appearance

☐ Show empty rows

Cell margins 1.00 mm

Background color

Advanced Customization...

Oversized text Truncate text

▼ ☒ Show Grid

Line width 0.50 mm

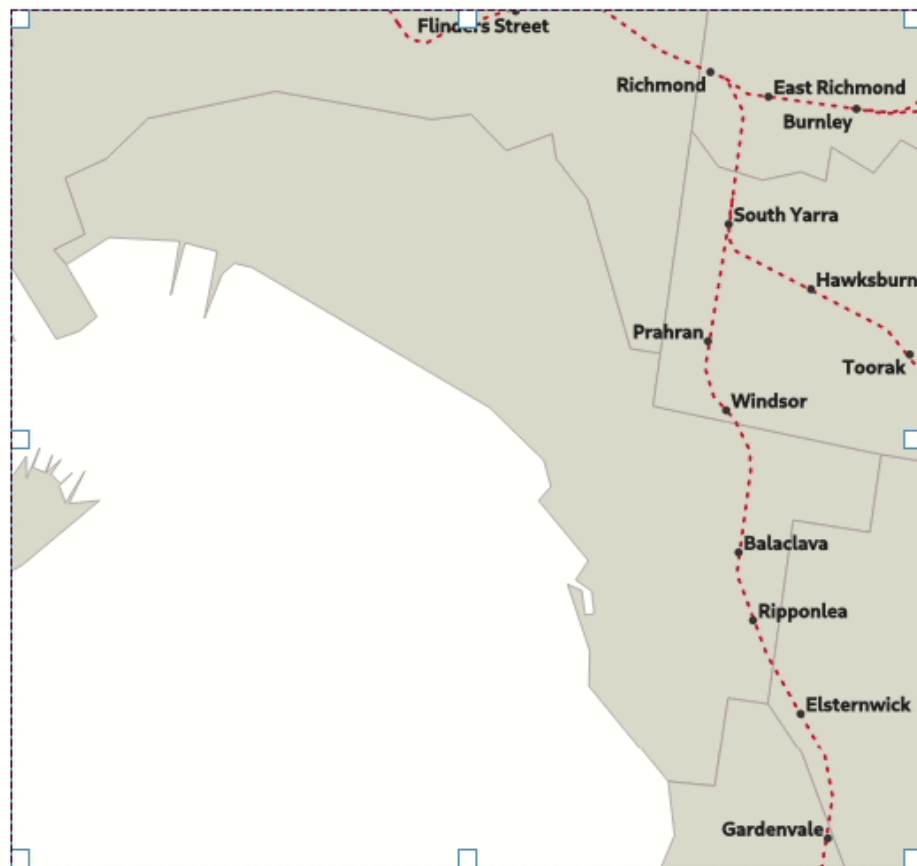
Color

☒ Draw horizontal lines

☒ Draw vertical lines



PORT PHILLIP



Items

Item

☒ ☐ Map 1

Layout

Item Properties

Guides

Atlas

Item Properties

Map 1



Main Properties

Scale 48597

Map rotation 0.00 °

CRS Use Project CRS

☒ Draw map canvas items

Layers

☐ Follow map theme (none)

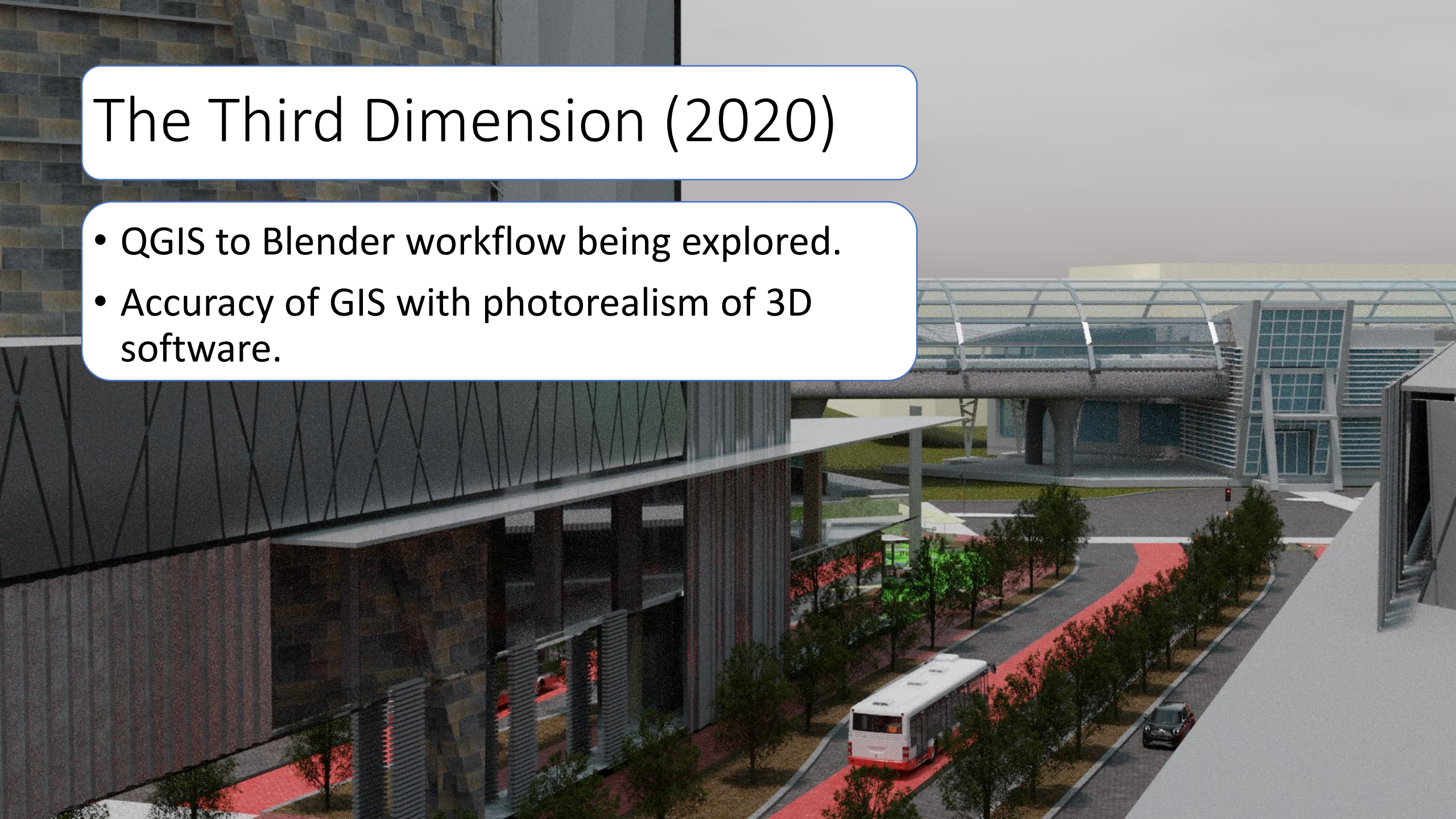
☐ Lock layers

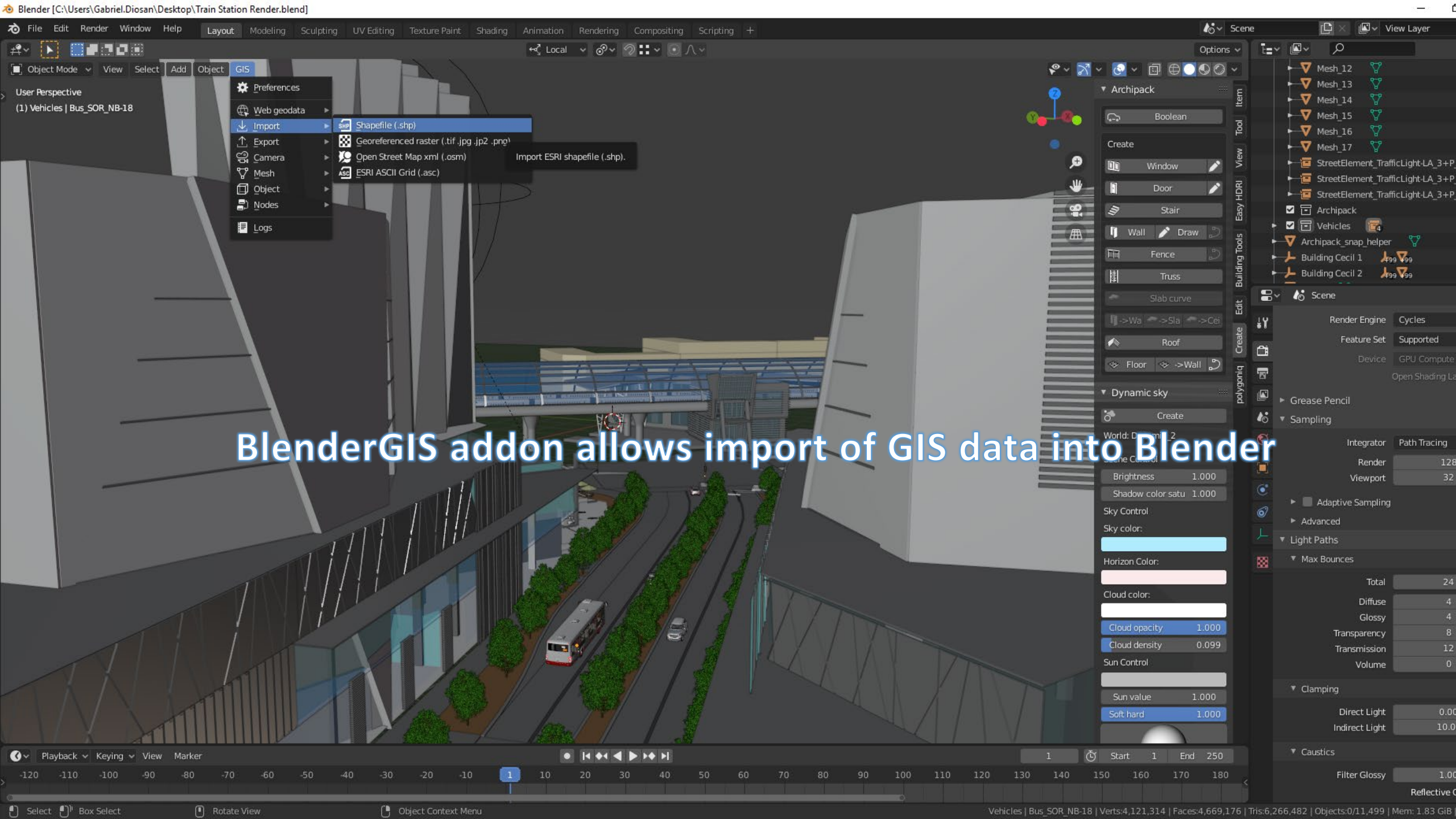
☐ Lock styles for layers

Extents

The Third Dimension (2020)

- QGIS to Blender workflow being explored.
- Accuracy of GIS with photorealism of 3D software.





BlenderGIS add-on allows import of GIS data into Blender

Summing up

- QGIS has significantly improved our ability to make evidence based decisions.
- Improvements in QGIS over time have made it more accessible and powerful.
- Options available to fund development and improve QGIS.
- Giving back to the QGIS community is important for the growth of the project.